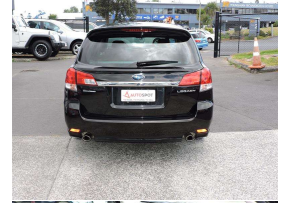


2009 Subaru Legacy 2.5 GT



VEHICLE INFORMATION

Cash Price

Includes GST

\$14,990

+ on-road-costs of \$495

Finance this vehicle
from only

\$85.54

per week*

Total Amount Payable

\$22,241.11

Gain peace of mind
with Mechanical
Breakdown Insurance.
Ask us how.

Body

5 door, Station Wagon

Odometer

141,491 km

Engine

2500 cc, Petrol

Fuel Type

Petrol

Transmission

Manual, All Wheel Drive

Wheels

-

VIN

-

Reg No.

-

Ext Colour

Black

History

-

Seats

5 seats

Interior

Black, Half leather

Audio

-

Stock ID

11790

Exterior Features

Interior Features

- » Air Conditioning
- » Power steering
- » Power Windows

Mechanical Features



Auto Spot, Phone 09 440 9190, Email adam@autospot.co.nz

5-11 Parkway Drive, Rosedale, North Shore, Auckland 0632, New Zealand

www.autospot.co.nz

* Finance calculation based on a 60 month term, no deposit and with an example annual fixed interest rate of 12.95%. Actual interest rate may be higher or lower. Includes an establishment fee of \$495.00 and a monthly maintenance fee of \$7.50. Full term total amount payable of \$22,241.11. Estimate only, not an offer of finance. Terms, conditions and lending criteria apply.